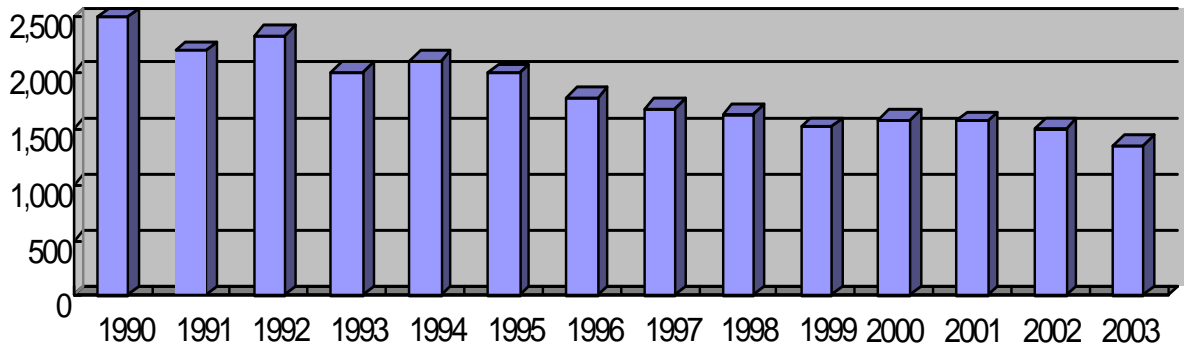


Japanese Traffic Accident Statistics for 2003 ~ Major Drop in Motorcycle Accident Fatalities ~

The total number of traffic accident fatalities recorded in Japan during 2003 was 7,702 persons, a decline of 7.5 percent from the previous year. This is the first time in 46 years that deaths from traffic accidents have fallen below 8,000 persons. Of this total, 1,353 persons perished in accidents while riding motorcycles, a 9.6 percent decline from 2002. As the graph below shows, this is just over half of the 2,492 motorcycle accident fatalities in 1990.

Number of Fatalities Riding Motorcycles



Recent Motorcycle Accident Fatalities vs. 1990 Total

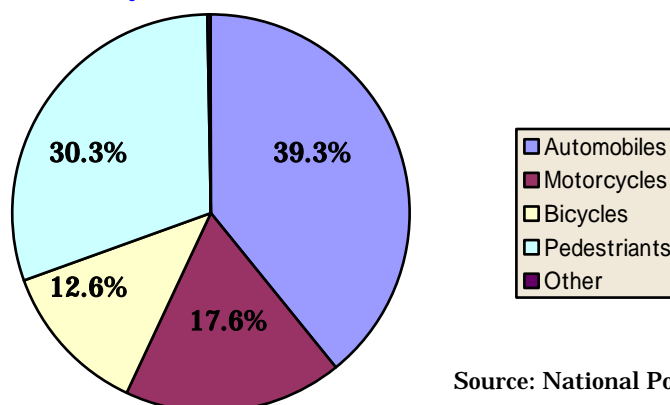
Year	Fatalities	Vs. previous year	Index
1990	2,492	-	100
2001	1,566	- 0.5%	63
2002	1,497	- 4.4%	60
2003	1,353	-9.6%	54

Source: National Police Agency

The Japanese motorcycle industry makes concerted efforts to improve rider skills, including the regular holding of safe driving courses, safe operation instruction sessions at dealer outlets and other ongoing programs. Recent years have also seen the implementation of motorcycle traffic safety campaigns, in a strong push to improve rider awareness and manners. For its part, JAMA continues to work through these and other constructive educational and enlightenment activities to further to reduce the number of motorcycle accidents on Japan's roads.

During 2003, meanwhile, the number of motorcycle rider fatalities accounted for 17.6 percent of all traffic accident deaths.

Motorcycle Rider Fatality Share of Total Traffic Accident Deaths in 2003

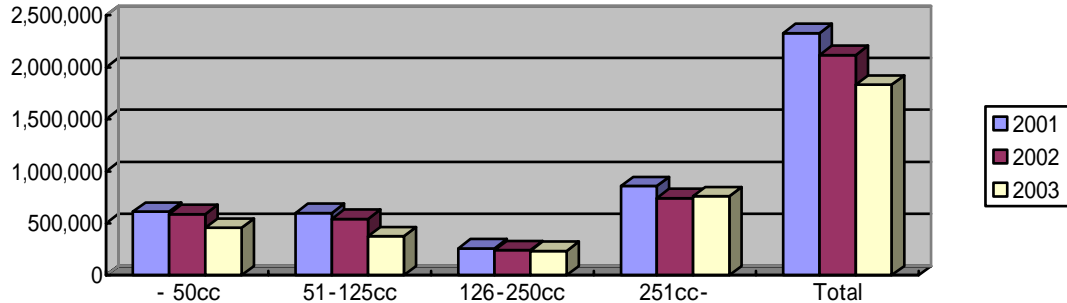


Source: National Police Agency

JAMA Big 4 Motorcycle Manufacturers Report Domestic Results for 2003

The following statistics for Japanese domestic motorcycle production, factory shipments and exports were published by JAMA in late January.

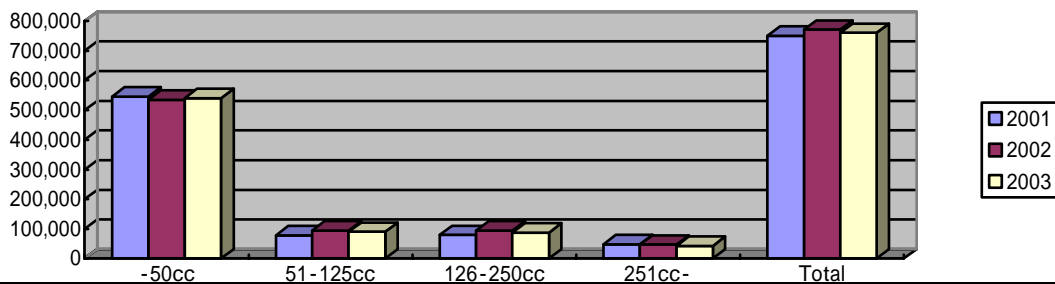
Domestic Production : Annual production dips below 2 million units



Year	- 50cc	51 - 125cc	126 - 250cc	251cc -	Total	%
2001	610,993	598,551	260,269	858,227	2,328,040	96.4
2002	588,956	543,294	241,356	741,882	2,115,488	90.9
2003	458,072	376,800	235,499	760,534	1,830,905	86.5

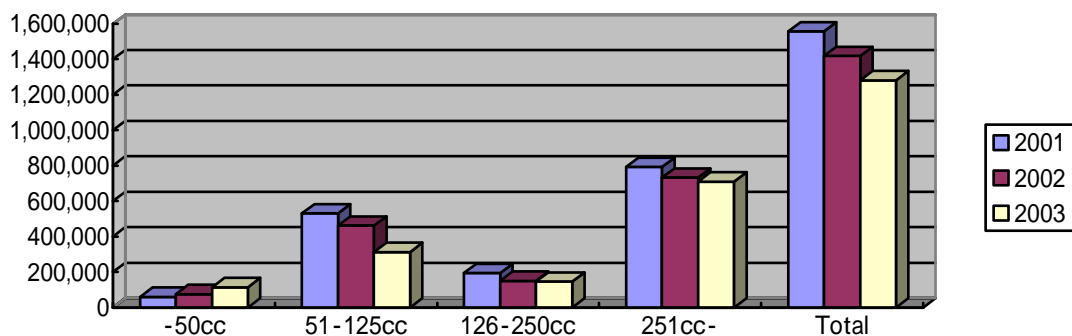
#: Compared to the previous year

Domestic Factory Shipments: First negative results in 2 years



Year	- 50cc	51 - 125cc	126 - 250cc	251cc -	Total	%
2001	544,988	78,263	79,156	48,279	750,686	96.3
2002	535,327	94,468	94,414	46,873	771,082	102.7
2003	539,610	89,906	87,881	42,724	760,121	98.6

Exports : Third straight year of decline



Year	- 50cc	51 - 125cc	126 - 250cc	251cc -	Total	%
2001	59,406	530,728	194,058	793,221	1,577,413	96.1
2002	74,811	462,137	149,900	731,834	1,418,682	89.9
2003	114,315	312,768	144,873	708,999	1,280,955	90.3

* * * * *